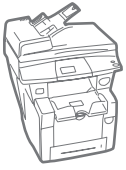


Phaser®
8860 / 8860MFP
Letter-size
Color
Printer / Multifunction Printer



Xerox Phaser® 8860 Color Printer / Phaser 8860MFP Multifunction Printer

A new way to
think about color



Color by the numbers

Xerox solid ink technology revolutionized office printing. For the first time, you could print brilliant color without sacrificing the speed, ease-of-use and reliability you came to expect from black-and-white devices. Now, solid ink eliminates the one remaining barrier between you and everyday color printing: Cost.

High performance color, low black-and-white price

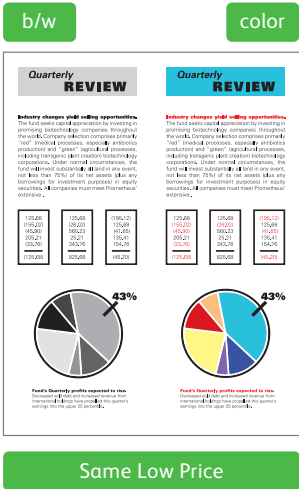
With the Phaser 8860 printer and 8860MFP multifunction printer, you can get amazing color for the same low cost as black-and-white.

It's time to say hello to the power of color in every office document you produce. And say goodbye to worrying about how much it costs. Color printing. Black-and-white price. It's that simple. Finally.

But low-cost color means nothing unless the color you get consistently meets your highest expectations. And rest assured, the Phaser 8860 and 8860MFP deliver color output that's truly exceptional, page after page.

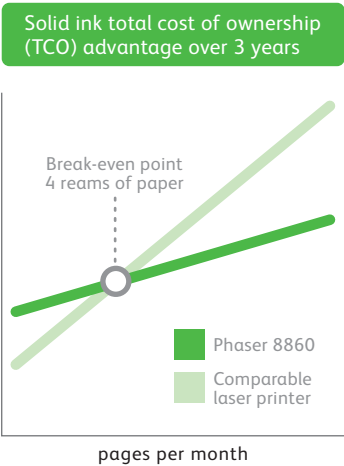
So rejoice, small to medium-size workgroups with high-volume print demands. There's never been a better opportunity to unleash your creativity and get the results you're after while optimizing of your bottom-line document costs.

Go ahead, do your best work. And make it colorful.



If you could do all of your company's printing in attention-grabbing color for the same low price as black-and-white, why wouldn't you?

Using color in your business-critical documents is the easiest way to achieve the best results — more sales, better retention, higher response rates and fewer mistakes. The Phaser 8860 printer and 8860MFP multifunction printer make it easier and more affordable than ever.



The print volume advantage.

If your monthly print volume averages 4 reams of paper or more, the Phaser 8860 printer and 8860MFP multifunction printer deliver a cost of color that's by far the best deal going.



More color possibilities.

Xerox solid ink prints a wider range of colors than most color laser devices. Count on solid ink technology to accurately print the "right" color and the smoothest blends and gradients—even tricky mid-tones like sky and skin.

Enhanced image quality.

For photo-quality color, and when you really want to impress, choose 2400 FinePoint™ print resolution mode. The super-fast draft mode is perfect for everyday prints and proofs.

Print right the first time.

True Adobe® PostScript® 3™ and automatic color-enhancement tools ensure that color-intensive documents print reliably and accurately.

Consistent color.

No other technology delivers such exceptionally consistent color, print after print — important for long print jobs or multiple prints of the same page. Solid ink also prints consistently printer to printer. That means documents printed at the branch office look exactly as they do when printed at headquarters.

Professional-quality color matching.

When color accuracy is a must, built-in PANTONE® spot-color correction tables ensure quick and easy PANTONE color matching. Get true renditions of important business colors — like your logo.

Award-winning technology.

With more than 50 major awards since its introduction, Xerox solid ink is a clear favorite among industry experts.

It is easy being green

Welcome to the world of solid ink — a place where bright, vivid color for the same low cost of black-and-white is just the beginning. It's where all of our colors — cyan, magenta, yellow and black — become green.

Be green with Xerox solid ink

And it's all made possible with Xerox solid ink, the office color solution with a cartridge-free design and minimal packaging. That simple combination means less energy used during manufacturing, drastically reduced landfill waste, and less storage space for better transportation efficiency and far fewer delivery trucks on the road — saving you shipping costs while benefiting the environment.

Now, busy workgroups that use the Phaser 8860 printer or 8860MFP multifunction printer for their important documents not only gain an edge in today's ultracompetitive business environment, they also get their best work done in a way that's less impactful on the natural environment.

So be green with Xerox solid ink — your easy, responsible, full-color office document solution.



Think beyond the ink. The benefits of solid ink go beyond cost and color quality.

Over the course of printing 192,000 pages, the waste generated by typical cartridge-based toner amounts to an astounding 449 lbs. Xerox solid ink, on the other hand, produces only 23 lbs. of waste — an amazing ratio of almost 20 to 1.

No-fuss drop-in loading.

Xerox solid ink sticks are engineered for maximum ease of use. Each color has a unique shape, making it impossible to misload. And because solid ink can be replenished before the device runs out, there's no device downtime when replacing ink.



Solid ink is just that: solid. Unlike laser print cartridges, it's safe to handle and there's nothing to spill, leak or smudge on your clothes. It's the no-mess color solution that's 100 percent dust free.

One consumable: Ink.

That's it. No big, bulky print cartridges, or fusers, fuser oil or imaging units found in a typical color laser printer. The only other replaceable item is a maintenance roller, which lasts for tens of thousands of pages and only needs to be replaced a few times throughout the life of your device.

Efficient use of paper.

Standard features like automatic two-sided printing and N-up printing fit more output onto a single sheet, saving time, trees and money.

Recycled paper

welcome. With solid ink, there's no need for "special" recycled paper. Print on any recycled stock — or almost any media, period — and get vibrant, high-quality color. Plus, solid ink printouts are completely recyclable.

Print more.

The solid ink imaging process is extremely efficient, producing nearly 100 percent ink-to-page transfer during normal printing. Solid ink does not leave behind residual toner and developer excess that collect in the waste container after each print.

Save valuable real

estate. Solid ink packages are small enough to easily fit in your desk drawer. There's no more need to take up an entire cabinet with printer supplies.

Phaser® 8860 /8860MFP

Printer / Multifunction Printer

The reliable, no-hassle people pleasers

Friends to both your bottom line and the environment, the Phaser 8860 printer and 8860MFP multifunction printer also pack the performance and ease of use to satisfy the rigorous demands of busy workgroups.

Easy all the way around

Whether you need robust printing or the additional capabilities that come with a true multi-function powerhouse, these two office devices are designed to make office life easier than ever. And with crowd-pleasing productivity as the benchmark, you're assured that every feature, function and design consideration exists to help your staff happily produce its best work.

And total ease-of-use goes hand-in-hand with real-world reliability, which is one more way the Phaser 8860 color printer and Phaser 8860MFP multifunction printer excel. Designed with a straightforward, virtually jam-free paper path, the devices contain far fewer moving parts, which means less chance for failure and more smiles on the faces of those who demand reliable, everyday productivity.



Built for speed

These devices are built to keep up, answering the call with a super-fast print speed of up to 30 ppm for both black-and-white and color.

Solid ink's color-optimized architecture and a fast controller give you the most important advantage for typical office color printing: A fast first-page-out time. As fast as 5 seconds, in fact. Wow.



Print more without interruption.

A 100-sheet tray for a wide range of custom media and sizes, plus a generous 525-sheet tray, come standard. Add one or two 525-sheet trays for a total capacity of 1,675 sheets and even more interruption-free productivity.



More muscle. A 750 MHz processor and 512 MB of memory (upgradeable to 1 GB) do some serious heavy lifting, making quick work of even the most intense projects. And these devices work hard for longer, with a monthly duty cycle of 120,000 pages — that's 240 reams of paper!

Built smart. PrintingScout® technology monitors your print projects. If a potential issue arises, a helpful pop-up alert suggests a remedy. Plus, an internet support system provides fast help when you need it.

Intelligent ready. The devices monitor usage history and automatically warm up just before the first page of the day is anticipated.

Safety first. Built-in security tools keep your data safe and sound. Secure Print holds hard-copy output until a PIN is entered, and Hard Drive Overwrite electronically "shreds" data after every job or on request.

All in one, one for all. With powerful printing, copying, scanning and faxing, the Phaser 8860MFP multifunction printer makes it easier for more people to get more work done. Plus, there's no waiting because multiple functions can be accessed at the same time: scan while printing or receiving an inbound fax, and walkup users can interrupt a print job to make a copy.

Super-easy scanning. Now scanning is as easy as making a copy, with no extra steps needed. Quickly turn loose paper documents into ultraportable digital files. Organize, edit, and distribute files with powerful onboard scanning tools. Scan files straight to your desktop, or to a public or private folder.

Phaser® 8860 /8860MFP



| | 8860N | 8860MFP/D |
|--|--|---|
| Speed | Up to 30 ppm color / 30 ppm black-and-white | |
| Duty Cycle | 120,000 images / month | |
| Paper Handling Paper input standard optional | Tray 1: 100 sheets; Custom sizes: 3 x 5 in. to 8.5 x 14 in. / 76 x 127 mm to 216 x 356 mm | |
| | Tray 2: 525 sheets; Selectable sizes: 5.5 x 8.5 in. to 8.5 x 14 in. / 140 x 216 mm to 216 x 356 mm | |
| | Tray 3: 525 sheets; Selectable sizes: 5.5 x 8.5 in. to 8.5 x 14 in. / 140 x 216 mm to 216 x 356 mm Tray 4: 525 sheets; Selectable sizes: 5.5 x 8.5 in. to 8.5 x 14 in. / 140 x 216 mm to 216 x 356 mm | |
| Document handler | NA | Duplex Automatic Document Feeder: 50 sheets |
| Paper output | 250 sheets | |
| Two-sided output | Standard | |
| Copy | | |
| First-page-out time | NA | As fast as 15 seconds color / 15 seconds black-and-white |
| Resolution (max) | NA | 600 x 600 dpi |
| Copy features | NA | Book copying, Booklet creation, Collation, Covers, Image Center, Image shift, N-up, Reduce / Enlarge, Repeat image, Color Password Protection |
| Print | | |
| First-page-out time | As fast as 5 seconds color | As fast as 6 seconds color |
| Resolution (max) | Up to 2400 FinePoint™ | |
| Memory (std. / max) | 256 MB / 1 GB | 512 MB / 1 GB |
| Processor / PDL | 750 MHz processor / True Adobe® PostScript® 3™, PCL® 5c emulation | |
| Connectivity | 10/100Base-TX Ethernet, USB 2.0 | |
| Print features | Custom-size pages, Xerox Installer, Intelligent Ready, Booklet printing, Smart Trays, Remote Printing, Job Accounting, Printer Neighborhood, Run Black | |
| Productivity kit (with Hard drive) | Optional | Personal/Personal Saved/Secure/Proof/Saved Print, (with Hard drive) Print With, Extended font/form storage, Collation, Hard Drive Overwrite |
| Scan | | |
| Scan destinations | NA | Scan to PC / Mac, Scan to TWAIN application, Scan to email via PC, Scan to desktop, Scan to Public / Private Folders |
| Scan to PC Desktop® | NA | Scan to PC Desktop, Professional Small Business Edition |
| Fax | | |
| Fax features | NA | 33.6 kbps Super Group 3, 200 individual / 100 group Speed dials, fax to multiple addresses, Fax security |
| Warranty | One-year on-site warranty, Xerox Total Satisfaction Guarantee | |

Device Management

Xerox® CentreWare® Printer Management for Microsoft, Novell and UNIX, Xerox CentreWare® IS Embedded Web Server, CentreWare Web, Xerox NDPS Gateway, Usage Analysis Tool, Configuration card, PrintingScout®, MailInX email alerts, PhaserSMART®

Print Drivers

Windows® 2000/XP/2003 Server, Vista, Mac OS® 9.x/X version 10.2 and higher, Novell NetWare® 5.x/6.5 (NDPS only), UNIX/Linux (see web), Xerox Walk-Up® Printer Drivers

Security

802.1x protocol* (EAP-MD5, EAP-TLS, EAP-PEAP-MSCHAPv2)

Media Handling

Tray 1: 16 – 40 lb. bond, 50 – 80 lb. cover / 60 – 220 gsm; Trays 2 – 4: 16 – 32 lb. bond, 22 – 45 lb. cover / 60 – 120 gsm; Duplex Automatic Document Feeder: 16 – 32 lb. bond, 22 – 45 lb. cover / 60 – 120 gsm; Media types: transparencies, envelopes, labels, glossy paper, custom-size paper

Operating Environment

Temperature: Nonoperating: -22° to 140° F / -30° to 60° C; Operating: 50° to 90° F / 10° to 32° C; Relative Humidity: Nonoperating: 10% to 95%; Operating: 10% to 80%; Sound power levels: Operating: 54 dBA, Standby: 33 dBA

Supplies

Genuine XEROX® Solid Ink
6 Sticks Cyan: 14,000 pages¹ 108R00746
6 Sticks Magenta: 14,000 pages¹ 108R00747
6 Sticks Yellow: 14,000 pages¹ 108R00748
6 Sticks Black: 14,000 pages¹ 108R00749

Options

Productivity Kit w/ Hard Drive (8860) 097S03856
525-Sheet Feeder (8860) 097S03667
525-Sheet Feeder (8860MFP) 097S03638
256 MB Memory (8860) 097S03381
512 MB Memory 097S03382
System Cart 097S03318
Wireless Network Adapter 097S03740
Scan to PC Desktop (8860MFP)

– Professional Small Business Edition (extra licenses)
see web for order details: www.xerox.com/office/scantodesktop

Routine Maintenance Items

Maintenance Kit <30,000 pages² 113R00736

Electrical

Power: 110 – 240 V, 50 – 60 Hz; Power consumption: Average: 230 W; Max: 1500 W; ENERGY STAR® qualified (S configuration)

Dimensions (WxDxH)

Phaser 8860: 16 x 21 x 14.5 in. / 406 x 533.4 x 368 mm; Weight: 60 lb. / 28 kg; Phaser 8860MFP: 20.9 x 26.2 x 24.4 in. / 532 x 665 x 620 mm; Weight: 93 lb. / 43 kg; Additional feeder: 5.3 in. / 135 mm; Weight: 16 lb. / 7.3 kg; Optional cart: 19.7 x 27 x 14.2 in. / 500 x 670 x 360 mm

Certifications

Certified to UL 60950-1/CSA 60950-1-03 1st Edition, FCC Part 15 Class A, Low Voltage Directive 73/23/EEC, EN 60950-1, EMC Directive 89/336/EEC, EN55022 Class A, EN 55024, ROHS Directive 2002/95/EC



Call today. For more information, call **1-877-362-6567** or visit us at www.xerox.com/office

¹ Average standard pages. Declared Yield in accordance with ISO/IEC 24711. Yield will vary based on image, area coverage and print mode.

² Approximate pages. Declared Yield based on letter-/A4-size 20 lb. (75 gsm) pages. Yield will vary based on media type, size, weight, orientation, and usage patterns.

© 2008 Xerox Corporation. All rights reserved. Contents of this publication may not be reproduced in any form without permission of Xerox Corporation. XEROX®, Phaser®, PhaserSMART®, CentreWare®, PrintingScout®, Walk-Up®, FinePoint and the sphere of connectivity design are trademarks of Xerox Corporation in the U.S. and/or other countries. All other trademarks are the property of their respective manufacturers. PANTONE Colors generated may not match PANTONE-identified standards. Consult current PANTONE publications for accurate color. PANTONE, and other Pantone, Inc. trademarks are the property of Pantone, Inc. PCL® is a registered trademark of Hewlett-Packard. As an ENERGY STAR® partner, Xerox Corporation has determined that this product meets the ENERGY STAR guidelines for energy efficiency. ENERGY STAR and the ENERGY STAR mark are registered U.S. marks. The information in this brochure is subject to change without notice. 11/08 610P729140E 886BR-01UF

