

XEROX®

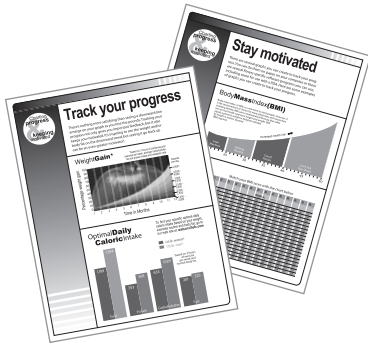
Technology | Document Management | Consulting Services

black-and-white laser printer

The printer that
works harder,
works smarter,
 and always **delivers**



Phaser® 4510 Laser Printer



A true office all-star.

The Xerox Phaser 4510 laser printer will exceed your demanding expectations. With unbeatable reliability, advanced intelligence features, and exceptional value, it's our most productive letter-size printer.

Total reliability, complete peace of mind

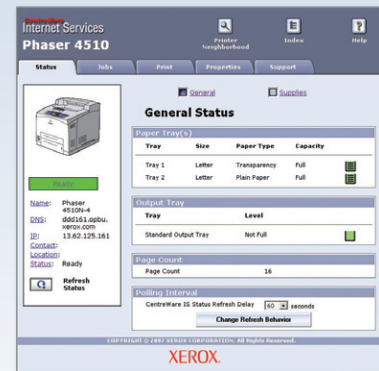
The Phaser 4510 is a workhorse office printer with rock-solid reliability and worry-free printing.

- 200,000-page duty cycle supports the heaviest office print volumes.
- Engineered to keep performing, with fewer moving parts to wear out and less consumables to replace.
- Reliable Xerox paper pick-and-feed operation virtually eliminates paper jams and keeps print jobs flowing smoothly.
- Proven performance backed by an industry-leading 1-year on-site warranty and the unmatched Xerox Total Satisfaction Guarantee.
- PhaserSMART® automated troubleshooting saves you time by providing 24/7 access to the Xerox Knowledge Base system.



Flexible and reliable paper handling

- 1 The 150-sheet Tray 1 (standard) handles up to 80 lb. (216 gsm) cover stock.
- 2 The 550-sheet Tray 2 (standard) allows you to add a full ream of paper. Plus, the auto size-sensing technology automatically determines the size of most media types before printing begins.
- 3 Add one or two additional 550-sheet feeders to boost paper capacity to 1,800 sheets.
- 4 The optional 500-sheet stacker with offset both expands output capacity and separates print jobs for easy distribution.



Connect a Phaser 4510 to your network and take advantage of Xerox CentreWare® software. Access printer and job status, get in-depth accounting information, set up email alerts, and more.

Uncommon intelligence, built right in

With advanced intelligence features, the Phaser 4510 printer works hard to enhance your productivity.

- Print driver installs in 4 mouse-clicks; networked models can be installed and configured over the web.
- Get accurate toner-level readings from the printer's front panel, driver or embedded web page.
- PrintingScout™ tracks print jobs and provides onscreen print-issue alerts and immediate correction suggestions.
- Smart Trays “know” the size and type of paper you've loaded, so your jobs automatically print on the intended media.
- Smart duplexing “knows” when a single-sided page is mixed in with two-sided print jobs and automatically passes through only the printed side, speeding up print time and eliminating unnecessary wear and tear.

A printer that earns its keep

The value-packed Phaser 4510 printer has it all: blazing print speed, outstanding print quality and the power to keep up with your business-critical print load.

- Get more for less. Even the base model has a high-speed 533 MHz processor, up to 512 MB memory, and Adobe® PostScript® 3™ language support. Add an optional 40 GB hard drive for additional functionality.
- A printing speed of up to 45 ppm makes short work of long and multiple-set print jobs.
- With a first-page-out time as fast as 8 seconds, the Phaser 4510 printer understands that time is money.
- True 1200 dpi output makes fine details stand out, even on photo grayscale images.
- Choose high-capacity print cartridges for a lower cost per page and reduced printer interventions.

Call today. For more information, call **1-877-362-6567** or visit us at **www.xerox.com/office**



	4510B	4510N	4510DT	4510DX
Speed	Up to 45 ppm			
Duty Cycle	200,000 pages / month			
Paper Handling				
Paper input	Standard Tray 1 (MPT): 150 sheets; Custom sizes: 3 x 5 in. to 8.5 x 14 in. / 76 x 127 mm to 216 x 356 mm Tray 2: 550 sheets; Custom sizes: 3.9 x 5.8 in. to 8.5 x 14 in. / 98 x 148 mm to 216 x 356 mm			
Tray 3: 550 sheets	Optional		Standard	
Tray 4: 550 sheets	Optional			
Paper output	500 sheets			
Stacker: 500 sheets	Optional		Standard	
Two-sided output	Optional		Standard	
Print				
First-page-out time	As fast as 8 seconds			
Resolution (max)	1200 x 1200 dpi			
Processor	533 MHz			
Memory (std / max)	128 MB / 512 MB			
Connectivity	Parallel, USB 2.0	10/100Base-TX Ethernet, Parallel, USB 2.0		
Page Description Languages	Adobe® PostScript® 3™, PCL® 5e emulation, PCL 6 emulation			
Print features	Smart Trays, Booklet printing, Poster printing, Edge-to-edge printing, Negative image, Mirror image, Scaling, Watermarks, Auto fit, Custom-size pages, Covers, Separators, RAM collation, N-up, Load-while-run			
	Remote printing, Job accounting			
Hard Drive Kit (minimum 40 GB)	Optional		Secure/Proof/Personal/Saved Print, Hard disk collation, Print With, PDF-direct printing, Extended font/form storage	
Warranty	One-year on-site warranty, Xerox Total Satisfaction Guarantee			

Device Management

CentreWare® IS Embedded Web Server, CentreWare® Web, Xerox NDPS Gateway, Xerox Usage Analysis Tool, PrintingScout™ Alert Notification (not available on nonnetworked model)

Print Drivers

Windows® 2000/XP/2003 Server, Vista, Mac OS® X version 10.2 or higher, Novell Netware® 5.x/6.5 (NDPS only), Linux Red Hat®, Fedora™ Core 5, SUSE 10.0, Unix: Sun Microsystems Solaris™ 9/10, IBM AIX® 5.1, HP-UX 11.0/11i, Xerox Walk-Up® Printer Drivers with Windows 2000 or higher

Font Capability

PostScript® fonts: 139; PCL® fonts: 81

Media Handling

Trays 1–4: 16–40 lb. bond to 50–80 lb. cover / 64–216 gsm, Two-sided output: 16–40 lb. bond to 50–80 lb. cover / 64–216 gsm. Media types: Plain paper, envelopes, labels, transparencies, card stock

Operating Environment

Temperature: 41° to 95°F / 5° to 35°C
Humidity: 15% to 85%
Sound pressure: Printing: 56.1 dB(A), Standby: 28.0 dB(A) Sound power: Printing: 7.19 B, Standby: 5.0 B
Warm-up time (from power save): 8 seconds or less, FPOT from power save: 25 seconds

Electrical

Power: 110–127 VAC, 50/60 Hz or 220–240 VAC, 50/60 Hz
Power consumption: Printing: 675 W, Standby: 80 W, Power save: 18 W, 4510DT/DX: ENERGY STAR® qualified

Dimensions (WxDxH)

16.6 x 18.3 x 17.3 in. / 422 x 465 x 404 mm
Weight: 45.2 lb. / 20.5 kg

Certifications

Listed to UL 60950-1/CSA 60950-1-03, 1st Edition, FDA/CDRH – Class 1 Laser Product, FCC Part 15, Class B, Canada ICES-003, Class B, CE marked, Low Voltage Directive 73/23/EEC, EN 60950-1, 1st Edition, EN 60825-1 – Class 1 Laser Product, EMC Directive 89/336/EEC, EN 55022, Class B, EN 55024, RoHS Directive 2002/95/EC, WEEE Directive 2002/96/EC

Supplies

Standard-Capacity Print Cartridge*:
10,000 pages¹ 113R00711
High-Capacity Print Cartridge:
19,000 pages¹ 113R00712

*Printer ships with Standard-Capacity Print Cartridge

Routine Maintenance Items

Maintenance Kit, 110V:
200,000 pages² 108R00717
Maintenance Kit, 220V:
200,000 pages² 108R00718

Options

Hard Drive Kit 097S03779
4510B to N Upgrade Kit 097S03623
Duplex Module 097S03625
550-Sheet Feeder 097S03624
500-Sheet Stacker with Job Offset 097S03764
128 MB Phaser Memory 097S03776
256 MB Phaser Memory 097S03777
20 MB Flash Memory 097S03778
Wireless Network Adapter 097S03740 (not available on 4510B)

¹Average standard pages. Declared Yield in accordance with ISO/IEC 19752. Yield will vary based on image, area coverage and print mode.

²Approximate pages. Declared Yield based on letter-/A-4-size 20 lb. (75 gsm) pages. Yield will vary based on media type, size, weight, orientation, and usage patterns.

