

Phaser®
4510
Letter-size
Black-and-white
Laser Printer



Xerox Phaser® 4510 Laser Printer

It works harder, works smarter,
and always delivers



Phaser® 4510 Laser Printer

A true office all-star. The Xerox Phaser 4510 laser printer will exceed your demanding expectations. With unbeatable reliability, advanced intelligence features, and exceptional value, it's our most productive letter-size printer.



Total reliability, complete peace of mind

The Phaser 4510 is a workhorse office printer with rock-solid reliability and worry-free printing.

- **250,000-page duty cycle** supports the heaviest office print volumes.
- **Engineered to keep performing**, with fewer moving parts to wear out and less consumables to replace.
- **Reliable Xerox paper pick-and-feed operation** virtually eliminates paper jams and keeps print jobs flowing smoothly.
- **Proven performance** backed by an industry-leading 1-year on-site warranty and the unmatched Xerox Total Satisfaction Guarantee.
- **PhaserSMART®** automated troubleshooting saves you time by providing 24/7 access to the Xerox Knowledge Base system.

Uncommon intelligence, built right in

With advanced intelligence features, the Phaser 4510 printer works hard to enhance your productivity.

- **Print driver installs in 4 mouse-clicks**; networked models can be installed and configured over the web.
- **Get accurate toner-level readings** from the printer's front panel, driver or embedded web page.
- **PrintingScout™** tracks print jobs and provides onscreen print-issue alerts and immediate correction suggestions.
- **Smart Trays** know the size and type of paper you've loaded, so your jobs automatically print on the intended media.
- **Smart duplexing** determines when a single-sided page is mixed in with two-sided print jobs and automatically passes through only the printed side, speeding up print time and eliminating unnecessary wear and tear.

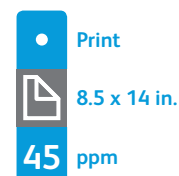
A printer that earns its keep

The value-packed Phaser 4510 printer has it all: blazing print speed, outstanding print quality and the power to keep up with your business-critical print load.

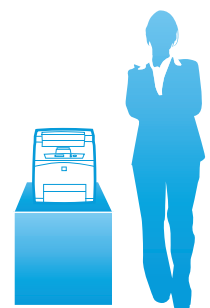
- **Get more for less.** Even the base model has a high-speed 533 MHz processor, up to 512 MB memory, and Adobe® PostScript® 3™ language support. Add an optional 40 GB hard drive for additional functionality.
- **A printing speed of up to 45 ppm** makes short work of long and multiple-set print jobs.
- **With a first-page-out time as fast as 8 seconds**, the Phaser 4510 printer understands that time is money.
- **True 1200 dpi output** makes fine details stand out, even on photo grayscale images.
- **Choose high-capacity print cartridges** for a lower cost per page and reduced printer interventions.

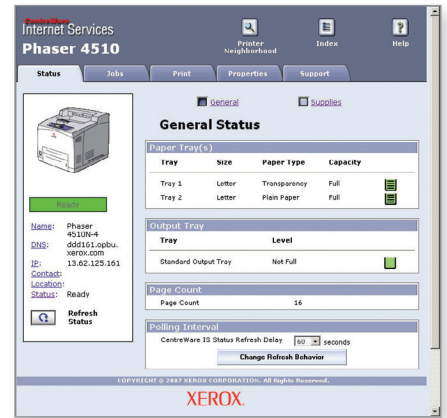
Phaser® 4510 Quick Facts

- Print up to 45 ppm
- 1200 x 1200 dpi
- 533 MHz processor
- 250,000 pages/month duty cycle
- 700-sheet capacity, expandable to 1,800 sheets



WxDxH:
16.6 x 18.3 x 17.3 in.
422 x 465 x 404 mm





Connect a Phaser 4510 to your network and take advantage of Xerox CentreWare® software. Access printer and job status, get in-depth accounting information, set up email alerts, and more.

Flexible and reliable paper handling

- 1 The 150-sheet Tray 1 (standard) handles up to 80 lb. (216 gsm) cover stock.
- 2 The 550-sheet Tray 2 (standard) allows you to add a full ream of paper. Plus, the auto size-sensing technology automatically determines the size of most media types before printing begins.
- 3 Add one or two additional 550-sheet feeders to boost paper capacity to 1,800 sheets.
- 4 The optional 500-sheet stacker with offset both expands output capacity and separates print jobs for easy distribution.



Phaser® 4510 Printer Configurations

Phaser 4510B

- 2-Tray, 700-sheet capacity
- USB and Parallel connectivity

Phaser 4510N

4510B model plus:

- Ethernet connectivity

Phaser 4510DT

4510N model plus:

- 3-Tray, 1,250-sheet capacity
- Automatic two-sided printing

Phaser 4510DX

4510DT model plus:

- 500-sheet stacker with job offset
- 40 GB hard drive

Options

- Hard drive kit
- Automatic two-sided printing
- 550-sheet feeder
- 550-sheet stacker with job offset
- Wireless Network Adapter
- Memory upgrade

Phaser® 4510

Black-and-White Laser Printer



		4510B	4510N	4510DT	4510DX
Speed		Up to 45 ppm			
Duty Cycle		250,000 pages / month			
Paper Handling	Paper input	Standard	Tray 1 (MPT): 150 sheets; Custom sizes: 3 x 5 in. to 8.5 x 14 in. / 76 x 127 mm to 216 x 356 mm		
			Tray 2: 550 sheets; Custom sizes: 3.9 x 5.8 in. to 8.5 x 14 in. / 98 x 148 mm to 216 x 356 mm		
	Optional	Tray 3: 550 sheets			Standard
		Tray 4: 550 sheets			
Paper output	Standard	500 sheets			
	Optional	Stacker: 500 sheets			Standard
Automatic two-sided printing		Optional			Standard
Print					
First-page-out-time		As fast as 8 seconds			
Resolution (max)		1200 x 1200 dpi			
Processor		533 MHz			
Memory (std / max)		128 MB / 512 MB			
Connectivity		Parallel, USB 2.0	10/100Base-TX Ethernet, Parallel, USB 2.0		
Page description languages		Adobe® PostScript® 3™, PCL® 5e emulation, PCL 6 emulation			
Print features	Standard	Smart Trays, Booklet printing, Poster printing, Edge-to-edge printing, Negative image, Mirror image, Scaling, Watermarks, Auto fit, Custom-size pages, Covers, Separators, RAM collation, N-up, Load-while-run			
		NA	Remote printing, Job accounting		
	Optional	Hard Drive Kit (minimum 40 GB): Secure/Proof/Personal/Saved Print, Hard disk collation, Print With, PDF-direct printing (with 512 MB memory), Extended font/form storage			Standard
Warranty		One-year on-site warranty, Xerox Total Satisfaction Guarantee			

Device Management

CentreWare® IS Embedded Web Server, CentreWare® Web, Xerox NDPS Gateway, Xerox Usage Analysis Tool, PrintingScout™ Alert Notification (not available on nonnetworked model)

Print Drivers

Windows® 2000/XP/2003 Server, Vista, Mac OS® X version 10.2 or higher, Novell Netware® 5.x/6.5 (NDPS only), Linux Red Hat®, Fedora™ Core 5, SUSE 10.0, Unix: Sun Microsystems Solaris™ 9/10, IBM AIX® 5.1, HP-UX 11.0/11i, Xerox Walk-Up® Printer Drivers with Windows 2000 or higher

Font Capability

139 PostScript® fonts; 81 PCL® fonts

Media Handling

Trays 1–4: 16–40 lb. bond to 50–80 lb. cover / 64–216 gsm; Two-sided output: 16–40 lb. bond to 50–80 lb. cover / 64–216 gsm; Media types: Plain paper, envelopes, labels, transparencies, card stock

Operating Environment

Temperature: 41° to 95°F / 5° to 35°C; Humidity: 15% to 85%; Sound pressure: Printing: 56.1 dB(A), Standby: 28.0 dB(A); Sound power: Printing: 7.19 B, Standby: 5.0 B; Warm-up time (from power save): 8 seconds or less, FPOT from power save: 25 seconds

Electrical

Power: 110–127 VAC, 50/60 Hz or 220–240 VAC, 50/60 Hz; Power consumption: Printing: 675 W, Standby: 80 W, Power save: 18 W; 4510DT/DX: ENERGY STAR® qualified

Dimensions (WxDxH)

16.6 x 18.3 x 17.3 in. / 422 x 465 x 404 mm; Weight: 45.2 lb. / 20.5 kg

Certifications

Listed to UL 60950-1/CSA 60950-1-03, 1st Edition, FDA/CDRH – Class B Laser Product, FCC Part 15, Class B, Canada ICES-003, Class B, CE marked, Low Voltage Directive 73/23/EEC, EN 60950-1, 1st Edition, EN 60825-1 – Class 1 Laser Product, EMC Directive 89/336/EEC, EN 55022, Class B, EN 55024, RoHS Directive 2002/95/EC, WEEE Directive 2002/96/EC

What Comes In The Box

- Phaser 4510 Printer
- Toner cartridge (10,000 print capacity)
- Drum cartridge (60,000 print capacity)
- World kit (includes Software and documentation CD, Registration card, Warranty booklet)
- Power cord

Supplies

Standard-Capacity Print Cartridge*: 113R00711
10,000 pages¹
High-Capacity Print Cartridge: 113R00712
19,000 pages¹

*Printer ships with Standard-Capacity Print Cartridge

Routine Maintenance Items

Maintenance Kit, 110V: 108R00717
Maintenance Kit, 220V: 108R00718

Options

Hard Drive Kit 097S03779
4510B to N Upgrade Kit 097S03623
Duplex Module 097S03625
550-Sheet Feeder 097S03624
500-Sheet Stacker with Job Offset 097S03764
128 MB Phaser Memory 097S03776
256 MB Phaser Memory 097S03777
20 MB Flash Memory 097S03778
Wireless Network Adapter 097S03740
(not available on 4510B)

¹ Average standard pages. Declared Yield in accordance with ISO/IEC 19752. Yield will vary based on image, area coverage and print mode.

² Approximate pages. Declared Yield based on letter/A4-size 20 lb. (75 gsm) pages. Yield will vary based on media type, size, weight, orientation, and usage patterns.



Call today. For more information, call **1-877-362-6567** or visit us at **www.xerox.com/office**

© 2008 Xerox Corporation. All rights reserved. XEROX®, Phaser®, CentreWare®, PhaserSMART®, PrintingScout™ and the sphere of connectivity design are trademarks of Xerox Corporation. ENERGY STAR® is a U.S. registered mark. As an ENERGY STAR® Partner, Xerox Corporation has determined that these products meet the ENERGY STAR® guidelines for energy efficiency. All other trademarks are the property of their respective manufacturers. Product information and/or specifications are subject to change without notice. 12/08 610P727700F 451B-01UG