

Phaser®
3600
Letter-size
Black-and-white
Laser printer



Xerox Phaser® 3600 Laser Printer Value-packed performance



Phaser® 3600 Laser Printer

Pure printing pleasure. Combining surprisingly high-end performance features with consistent day-in-day-out reliability — all in a compact device that's built to keep your productivity high and your costs low.

The power to please

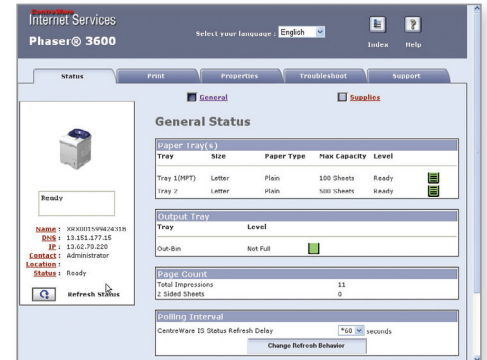
The Phaser 3600 laser printer brings Xerox quality and superior performance to single users and small workgroups that demand superior productivity.

- **Fast printing performance** delivers results at up to 40 ppm — plenty of speed to keep up with your big print load.
- **A first-page-out time as fast as 9 seconds** means you spend less time waiting for print jobs and more time staying productive.
- **Complex print jobs, handled with ease.** A robust 400 MHz processor works behind the scenes to quickly take care of whatever comes its way — even multipage jobs loaded with graphics.
- **Network printing** (standard on the N and DN configurations) makes the Phaser 3600 laser printer a more powerful office ally, helping more users get more work done.
- **Get even more helpful capabilities**, like Secure Print, which keeps a private print job in the queue until released by the job owner, and RAM collation, which speeds up larger print jobs by quickly processing multiple sets of multipage documents.

Unbeatable value

With advanced features typically found on higher-priced laser printers, the Phaser 3600 offers more performance for less.

- **More speed, better features and a robust, user-friendly design** — no other printer in its class matches the Phaser 3600 laser printer's total-value offering.
- **Print more without interruption** with two standard paper trays holding a total of 600 sheets. Need more capacity? An additional 500-sheet tray is available.
- **Affordability comes standard**, with a low cost per page and helpful, cost-saving features like toner-save and energy-save modes, plus available automatic two-sided printing and N-Up printing for more efficient paper usage.
- **The print cartridge is easy to replace**, and lets you choose standard-capacity at a lower price, or high-capacity, for greater print volumes and reduced total cost of ownership.
- **We stand behind our promise** of outstanding reliability and performance with a standard one-year warranty. Plus, the **Xerox Total Satisfaction Guarantee** provides free replacement of your Xerox device if for any reason you are not satisfied with its performance.



Xerox simplicity

Helpful administration tools, like CentreWare IS internal web server, make it fast and easy to manage everyday usage. You get quick and convenient access to a wealth of features, including printer and job status, and toner volume updates, media availability, in-depth accounting information, simplified printer installation and network administration, and more.

The security your business needs

Safe documents

- Secure print holds job in the queue until released with a PIN.
- Watermark customizes documents with words, such as "Confidential."

A good network citizen

- IEEE 802.1x protocol ensures that connected printers have proper authorization.
- HTTP enables secure device administration.
- SNMP v3.0 provides encrypted network management.

Phaser® 3600 Quick Facts

- Print up to 40 ppm
- 600 x 600 dpi (up to 1200 x 1200 enhanced image quality)
- 400 MHz processor
- 200,000 pages/month duty cycle
- 600-sheet capacity, expandable to 1,100 sheets



Print

8.5 x 11 in.

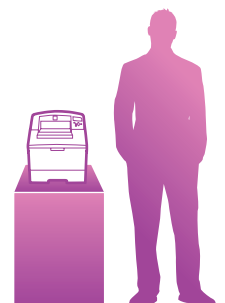
40 ppm

WxDxH:
3600B, N:

15.7 x 18.8 x 15.1 in.
399 x 478 x 383 mm

3600DN:

15.7 x 20.2 x 15.1 in.
399 x 512 x 383 mm

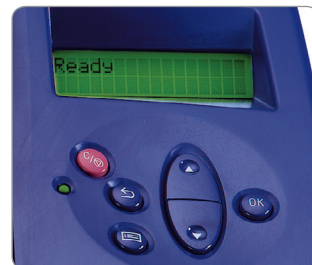


The capacity to do more

The Phaser 3600 laser printer offers more printing features for fast-paced businesses on a budget. A choice of configurations are available to meet the needs of a busy single user or a small work team, while more options further expand the printer's capabilities.

Simple layout and easy-to-read

two-line front panel user interface displays the printer status, error messages and jobs in progress.



1

Automatic two-sided printing is standard on the Phaser 3600DN, and available as an option on the Phaser 3600B and 3600N models.

2

100-sheet multipurpose tray handles a variety of paper, from 16 – 43 lb. bond to 60 lb. cover (60 – 163 gsm), including envelopes, labels, business cards and other specialty media.

3

500-sheet input tray feeds 16 lb. to 28 lb. (60 – 105 gsm) paper.

4

Add an additional 500-sheet input tray to boost total paper input capacity to 1,100 sheets.



Phaser® 3600 Printer Configurations

Phaser 3600B

- 2-Tray, 600-sheet capacity
- 64 MB memory (expandable to 512 MB)

Phaser 3600N

3600B plus:

- 10/100Base-TX Ethernet
- 128 MB memory (expandable to 512 MB)

Phaser 3600DN

3600B plus:

- Automatic two-sided printing
- 10/100Base-TX Ethernet
- 128 MB memory (expandable to 512 MB)

Options

- Automatic two-sided printing (standard on 3600DN)
- One additional 500-sheet input tray
- Additional memory
- Wireless network adaptor

Phaser® 3600

Black-and-White Laser Printer



	3600B	3600N	3600DN
Speed	Up to 40 ppm letter, 38 ppm A4		
Duty Cycle	200,000 pages / month		
Paper Handling			
Paper input	Standard		
	Tray 1 (MPT): 100 sheets; Custom sizes: 3 x 5 to 8.5 x 14 in. / 76 x 127 mm to 216 x 356 mm		
	Tray 2: 500 sheets; Selectable sizes from letter to legal / A6 to A4		
Optional	Tray 3: 500 sheets; Selectable sizes from letter to legal / A6 to A4 (1,100-sheet total capacity)		
Paper output	250 sheet face-down, 100 sheet face-up		
Automatic two-sided printing	Optional		Standard
Print			
First-page-out-time	As fast as 9 seconds		
Resolution (max)	600 x 600 dpi (up to 1200 x1200 enhanced image quality)		
Processor	400 MHz		
Memory (std / max)	64 MB / 512 MB	128 MB / 512 MB	
Connectivity	Parallel, USB 2.0	10/100Base-TX Ethernet, Parallel, USB 2.0	
Page description languages	PostScript® 3™ compatibility, PCL®6 and 5e emulations		
Print features	Smart Trays, Booklet printing, Scaling, Fit to page, Watermarks, Overlays,		
Standard	Posters, Custom-size pages, Covers, N-up, Toner save mode, Secure print*, Collation*		
Warranty	One-year on-site warranty, Xerox Total Satisfaction Guarantee		

*Standard on N/DN Configurations, Optional on B Configuration

Device Management

Phaser Installer, CentreWare® IS Embedded Web Server*, CentreWare® Web*, Global Print Driver*, Font management utility*

*3600N and 3600DN

Print Drivers

Windows® 2000/XP/2003/2008 Server, Vista, Mac OS® 10.2 and above, Novell Netware® 4.x/5.x/6, Various Linux OS including Red Hat® 8–9, Fedora™ Core 1–4, Mandrake 9.2–10.1, SuSE 8.2–9.2, Unix HP-UX, Sun Solaris, Xerox Walk-Up® Printer Drivers

Font Capability

136 PostScript® fonts; 68 PCL® fonts
(4 MB flash memory for fonts and macros)

Media Handling

Tray 1: 16–43 lb. bond to 60 lb. cover / 60–163 gsm
Tray 2 and Tray 3 (optional): 16–28 lb. bond / 60–105 gsm
Two-sided output: 20–24 lb. bond / 75–90 gsm

Media types

Plain paper, envelopes, labels, transparencies, cardstock

Operating Environment

Temperature: 50° to 90°F / 10° to 32°C
Humidity: 20% to 80%
Sound pressure: Printing: 56.0 dB(A),
Standby: 35.0 dB(A)
Warm-up time (from power save):
31 seconds or less,
FPOT from power save: 40 seconds

Electrical

Power: 110–127 VAC, 50/60 Hz or 220–240 VAC, 50/60 Hz
Power consumption: Printing: 700 W,
Standby: 130 W, Power save: 13 W,
3600DN: ENERGY STAR® qualified

Dimensions (WxDxH)

3600 B/N: 15.7 x 18.8 x 15.1 in. / 399 x 478 x 383 mm
Weight: 39 lb. / 17.9 kg
3600 DN: 15.7 x 20.2 x 15.1 in. / 399 x 512 x 383 mm
Weight: 42 lb. / 20.9 kg

Certifications

Listed to UL 60950-1/CSA 60950-1-03, 1st Edition, FDA/CDRH – Class 1 Laser Product, FCC Part 15, Class B, Canada ICES-003, Class B, CE marked, Low Voltage Directive 2006/95/EC, EN 60950-1, 1st Edition, EN 60825-1 – Class 1 Laser Product, EMC Directive 2004/108/EC, EN 55022, Class B, EN 55022, Class B, RoHS Directive 2002/95/EC, WEEE Directive 2002/96/EC

What comes in the box

- Phaser 3600 Printer
- Print cartridge (7,000 print capacity)
- World Kit (includes Software and documentation CD, Registration card, Warranty booklet)
- USB Cable
- Power cord

Supplies Recycling Program

Consumables for the Phaser 3600 are part of the Xerox Green World Alliance Supplies Recycling Program. For more information, please visit the Green World Alliance website at www.xerox.com/gwa

Supplies

Print cartridge: 7,000 pages¹ 106R01370
Print cartridge: 14,000 pages¹ 106R01371

Options

Duplex Module 097S03756
500-Sheet Feeder 097N01673
64 MB Phaser Memory 097S03759
128 MB Phaser Memory 097S03760
256 MB Phaser Memory 097S03761
Wireless Network Adapter 097S03740
(not available on 3600B)

¹ Average standard pages. Declared Yield in accordance with ISO/IEC 19752.
Yield will vary based on image, area coverage and print mode.



Call today. For more information, call **1-877-362-6567** or visit us at www.xerox.com/office

© 2008 Xerox Corporation. All rights reserved. XEROX®, CentreWare®, Phaser® and the sphere of connectivity design are trademarks of Xerox Corporation in the U.S. and/or other countries. ENERGY STAR® is a U.S. registered mark. As an ENERGY STAR® Partner, Xerox Corporation has determined that these products meet the ENERGY STAR® guidelines for energy efficiency (3600DN). All other trademarks are the property of their respective manufacturers. Product information and/or specifications are subject to change without notice. 12/08 610P729645F 36XBR-01UG

